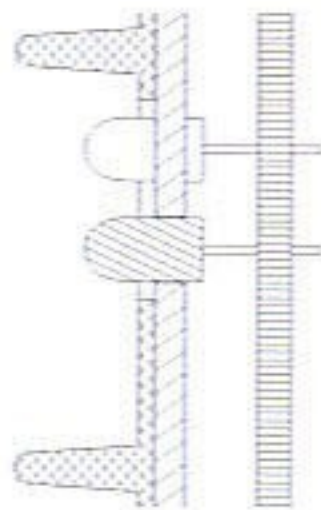


# Rail Fence for all Sporting Stadiums

## Rail Fence Series



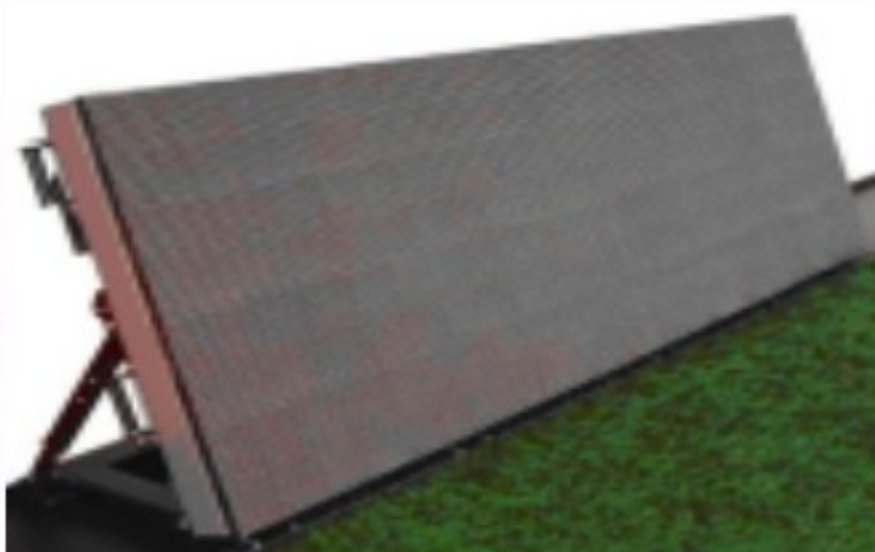
Soft Module cover



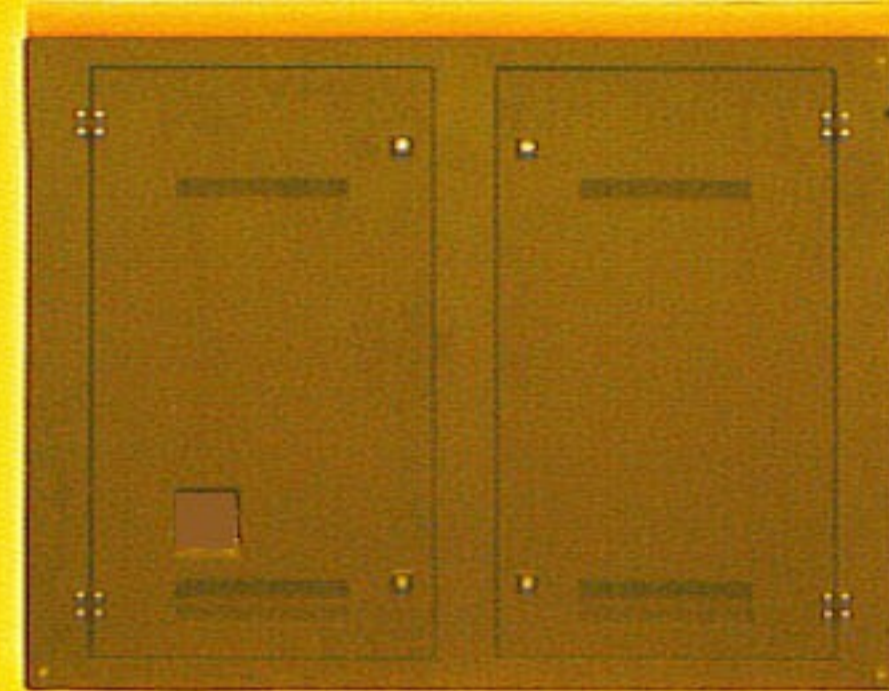
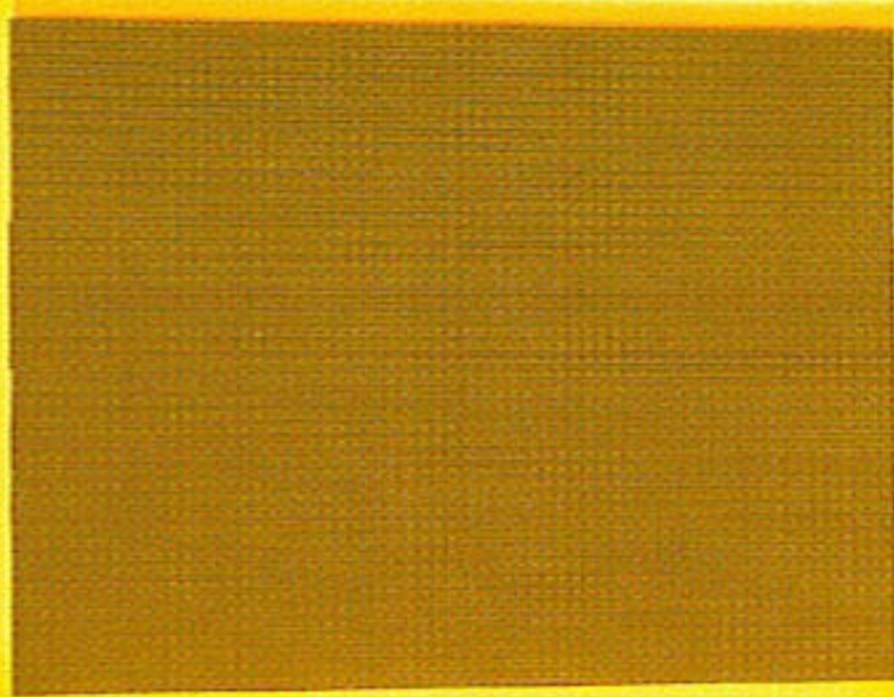
**Raidl Fence** display series are specifically designed for courts display of all kinds of balls.

The cabinets incorporate flexible & soft module cover & rim, and supporting racks, all of which effectively secure the panel and safeguard athletes from injury.

The feature of extended viewing angle is also included and guarantees no color faded-out of the long-shaped panel.

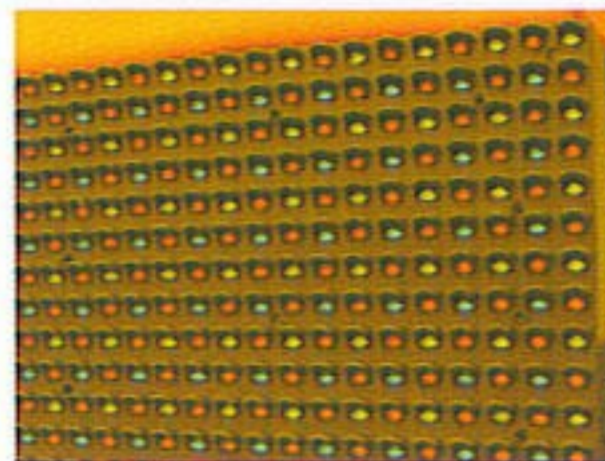


- High-tech Processing in LED lighting
- Humanity & Safety Design
- Video synchronous Display

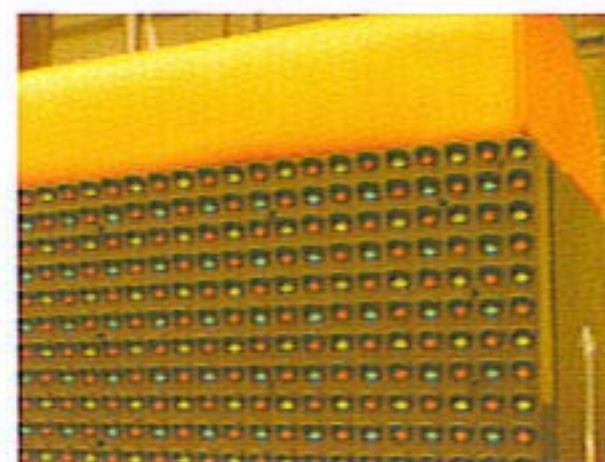


**BRILLIANCE**

**SAFETY**



Horizontally-expanded in size  
No color fade-out

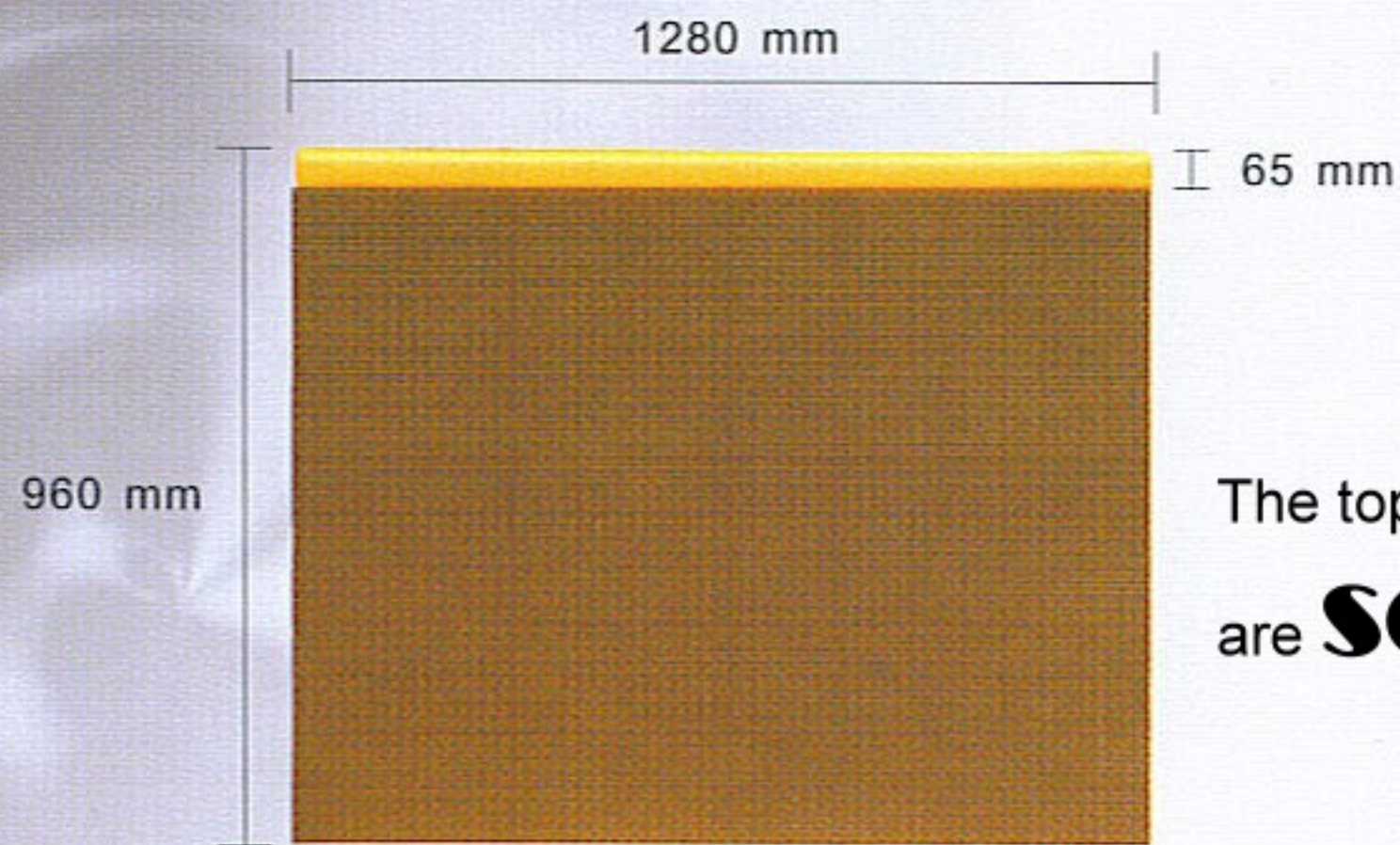


Flexible & soft module cover & cabinet rim.

Application

- Special for stadium





The top rim & module cover  
are **soft**

### LED CABINET

Model No	TP- P2060DC-F	TP- P2560DC-F
Pixel pitch	20mm	25mm
Pixel density	2500pixels/m <sup>2</sup>	1600pixels/m <sup>2</sup>
Luminosity	6000nit	6000nit
Contrast	1000:1	1000:1
Pixel configuration	Lamp R2G1B1	Lamp R1G1B1
Weight	40kg/m <sup>2</sup>	40kg/m <sup>2</sup>
Horizontal visual angle	110	110
Vertical visual angle	50	50
Grey level	14bit	14bit
Data fresh rate	≥600HZ	≥600HZ
Data communication	DVI	DVI
Life span	50000h	50000h
Weatherproof	Front Ip65	Front Ip65
Max power consumption	1000W/m <sup>2</sup>	640W/m <sup>2</sup>
Ambient temperature	-25 - 70 C	-25 - 70 C
Relative humidity	10-99%	10-99%
Cabinet size	960×1280 mm	1000×1000 mm